



# STORM CREEK<sup>®</sup>



2024 Collection

EVERYDAY ECO



 **STORM CREEK®**

Let's seek better. **Together.**

Storm Creek makes **Better Product for the Greater Good.** From recycled fabrics to mindful tailoring to fine details, we weave sustainability and innovation into everything we do.

You can wash and wear our apparel year after year and look good (and feel good too!) every time. We aren't your ordinary clothing brand — we're building something better. **And we're so happy you're here.**



# Table of Contents

Long Sleeve Tees	6
Polos	10
4-Way Stretch	14
Lightweight	20
Midweight	27
Heavyweight	36
Sweaterfleece	46
Insulated	50
Softshell	64
Rain	66
Wind	70
Accessories	74
Private Label	75
Visual Index	76
Size Charts	78
Ordering Info	79

**# BOTTLES RECYCLED\*** = Max Bottles Per Garment

See this icon for recycled bottles per garment. All styles produced since 2020 are made with recycled plastic bottles or other post consumer waste. Bottle counts vary by style, fabric type, and color. For exact bottle counts per style/color please visit [stormcreek.com](https://stormcreek.com).

**C** = Core Color In Stock Year-Round

These colors are safe to place in a reordering program. Items not marked core are seasonal\*

**N** = New Color

These colors are new for 2024.\*



\* Arrival dates and size offering per color may vary.  
Please visit [distributor.stormcreek.com](https://distributor.stormcreek.com) for availability.

**THIS CATALOG IS PRINTED ON PAPER MADE  
FROM 10% POST-CONSUMER WASTE**



Storm Creek's commitment to sustainability includes sourcing fabrics made using **recycled materials and sustainable practices**. From start to finish, we hold ourselves and our factory partners to the **highest social and environmental standards**.

**Sustainable Sourcing** means we work incredibly hard at maintaining a balance between **environmental care, social well-being**, and **best-in-class** apparel. **Every style in our line is eco-made.**

NEW STYLE

# Sightseer Hoodie

Our most versatile hoodie yet.

Designed to keep you fresh from your morning workout to an afternoon coffee run. Sightseer hoodie provides all day versatility.

\$50.00 MSRP

1570 | Men's | S-4XL

1575 | Women's | XS-3XL

47% recycled polyester/47% polyester/  
6% spandex jersey heather

- UPF 30+ sun protection
- Subtle pinstripe design lends style and breathability
- Quick dry fabric is moisture-wicking and low maintenance

1570 | Men's | 16 BOTTLES RECYCLED\*



Meadow Green | N  
Dark Heather Gray | N  
White | N  
Olive Drab | N

1575 | Women's | 14 BOTTLES RECYCLED\*



Meadow Green | N  
Dark Heather Gray | N  
White | N



Melon Orange | N  
Nutmeg | N



Droptail hem (women's)

DID YOU KNOW?

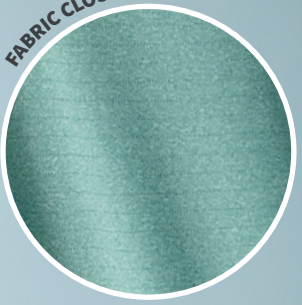
We are committed to giving our

## 5 MILLION<sup>th</sup> DOLLAR

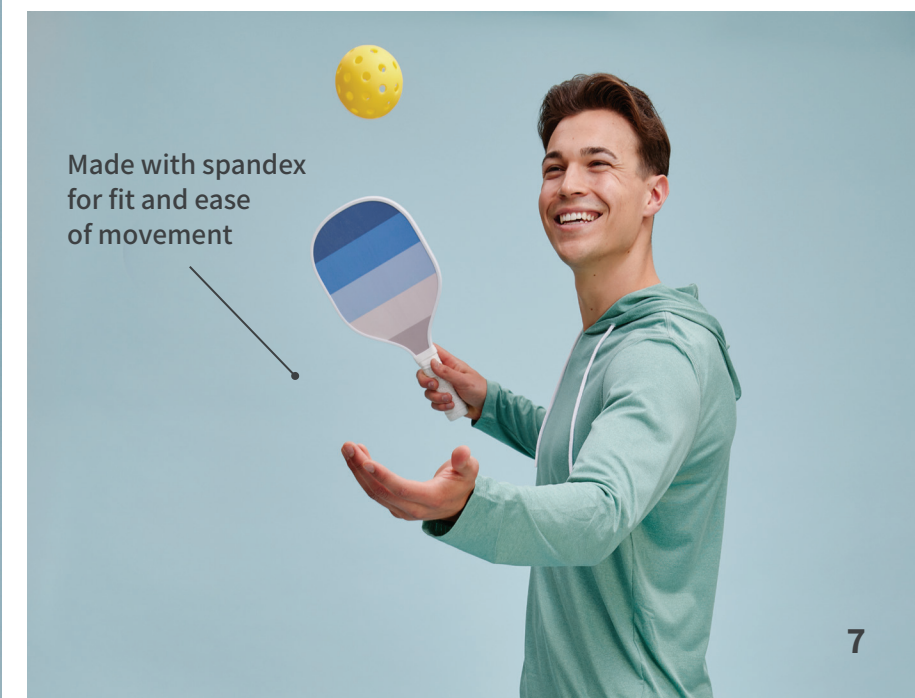
to charity by 2030



FABRIC CLOSE UP



Thumbholes (women's)



Made with spandex for fit and ease of movement

NEW COLORS

# Sightseer Long Sleeve Tee

A tee to love.

Warm day and need sun protection? Cool day and need an extra layer? Check and check.

\$40.00 MSRP

1560 | Men's | S-4XL

1565 | Women's | XS-3XL

47% recycled polyester/47% polyester/  
6% spandex jersey heather

- UPF 30+ sun protection
- Subtle pinstripe design lends style and breathability
- Fabric is moisture-wicking and low maintenance



Droptail hem (women's)

1560 | Men's | 14 BOTTLES RECYCLED\*



1565 | Women's | 12 BOTTLES RECYCLED\*



**NEW COLORS**

# Optimist Polo

Look seriously good (hello microstripe!) while staying seriously comfortable. Keep your cool on the course round after round.

**\$50.00 MSRP**

**1810** | Men's | S-5XL, LT-3XLT

**1855** | Women's | XS-3XL

69% polyester/ 23% recycled polyester/ 8% spandex interlock microstripe

**1810** | Men's | **4 BOTTLES RECYCLED\***



Black | C Peri Blue | C Navy | C Melon Orange | N

**1855** | Women's | **3 BOTTLES RECYCLED\***



Black | C Peri Blue | C Navy | C Glacier Blue



FABRIC CLOSE UP



Bonded placket collar holds shape wash after wash

UPF 30+ sun protection

Feminine V-neck collar (women's)

Quick dry fabric is breathable and easy to care for

**1855** Glacier Blue

**1810** Melon Orange

**NEW STYLE**

# Renewer Polo

Enjoy the soft feel of bamboo with this function polo, ideal for the office, course, and casual outings.

**\$55.00 MSRP**

**1870** | Men's | S-3XL

60% recycled polyester/40% bamboo viscose

- UPF 30+ sun protection
- Bamboo fabric is soft, cozy, and durable
- Naturally anti-microbial properties keep you fresh

**1870** | Men's | **8 BOTTLES RECYCLED\***



Charcoal | N



Peri Blue | N

C = Core Color N = New Color \*Max Bottles Per Garment **11**

# Activator Polo

New kid on the (color)block.

\$55.00 MSRP

1860 | Men's | S - 4XL

1865 | Women's | XS - 2XL

Solid: 92% recycled polyester/8% spandex

Heather: 46% recycled polyester/46% polyester/  
8% spandex interlock

- UPF 30+ sun protection
- Moisture-wicking fabric keeps you fresh
- Stretch interlock fabric is cozy and stylish
- Tailored collar with collar stay holds shape wash after wash (men's)



1860 Light Heather Gray/White  
1865 Dark Heather Gray/Black

1860 | Men's | 13 BOTTLES RECYCLED\*



Black/Dark Heather Gray | C  
Light Heather Gray/White | C  
Peri Blue/White

1865 | Women's | 11 BOTTLES RECYCLED\*



Dark Heather Gray/Black | C  
White/Light Heather Gray | C  
Peri Blue/White

NEW COLORS

# Visionary II Polo

Polos that live with you.

\$50.00 MSRP

1821 | Men's | S-5XL, LT-3XLT

1825 | Women's | XS-3XL

Solid: 92% recycled polyester/  
8% spandex

Heather: 46% recycled polyester/  
46% polyester/8% spandex interlock

- UPF 30+ sun protection
- Tailored collar with collar stay holds shape wash after wash (men's)
- High-stretch fabric moves with you
- Moisture-wicking fabric keeps you fresh



1821 Navy

1825 Peri Blue

1821 | Men's | 16 BOTTLES RECYCLED\*



Black | C  
Peri Blue | C  
White | C  
Navy | C  
Dark Heather Gray | C  
Red | N  
Flame Orange | N

1825 | Women's | 10 BOTTLES RECYCLED\*



Black | C  
Peri Blue | C  
White | C  
Navy | C  
Dark Heather Gray | N  
Red | N  
Violet Purple



Hidden button-down collar

Ready-to-wear wrinkle-free fabric

# Naturalist Woven Shirt

For the outdoor enthusiast in us all.

We're big proponents of the movement to get outside, and this shirt pushes us out the door. It's the shirt that makes everything possible: fishing, hiking, traveling, and anything else that makes you feel whole (yes, even reading!). Get one and get out.

- Unique Japanese yarn is breathable and comfortable
- 4-way stretch moves with you
- UPF 30+ sun protection
- Bonded placket and collar hold shape wash after wash

## Short Sleeve

\$85.00 MSRP

2480 | Men's | S-3XL

2485 | Women's | XS-2XL

55% polyester/37% recycled polyester/8% spandex

2480 | Men's | **7 BOTTLES RECYCLED\*** 2485 | Women's | **6 BOTTLES RECYCLED\***



Blue Mist

Gray

Platinum

Blue Mist

Gray

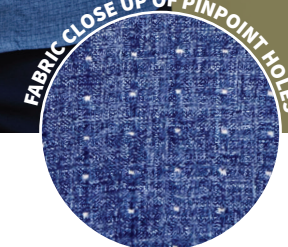
### DID YOU KNOW?

Storm Creek helps protect our nations

**400+**  
national parks



Zippered chest pocket keeps your personal items safe



## Long Sleeve

\$90.00 MSRP

2550 | Men's | S-5XL, LT-3XLT

2555 | Women's | XS-3XL

55% polyester/37% recycled polyester/8% spandex

2550 | Men's | **9 BOTTLES RECYCLED\***



Gray | **C**

Blue Mist

Navy

Platinum

2555 | Women's | **8 BOTTLES RECYCLED\***



Gray

Blue Mist

Navy

Platinum





**DID YOU KNOW?**

The Influencer Woven Shirt is moving to a **92% recycled fabric in 2024**

# Influencer Woven Shirt

Stretch to impress.

**\$75.00 MSRP**  
55% polyester/37% recycled polyester/8% spandex woven

- UPF 30+ sun protection
- 4-way stretch moves with you
- Ready-to-wear wrinkle-free fabric
- Bonded collar holds shape wash after wash

## Solid

**2580** | Men's | S-5XL, LT-2XLT | **8 BOTTLES RECYCLED\***



**2585** | Women's | XS-3XL | **7 BOTTLES RECYCLED\***



## Gingham

**2570** | Men's | S-5XL, LT-2XLT | **8 BOTTLES RECYCLED\***



**2575** | Women's | XS-3XL | **7 BOTTLES RECYCLED\***



## Microplaid

**2560** | Men's | S-5XL, LT-2XLT | **8 BOTTLES RECYCLED\***



**2565** | Women's | XS-3XL | **7 BOTTLES RECYCLED\***



\*Max Bottles Per Garment **17**

NEW COLORS

# Influencer Woven Shirt

Boardroom ready.

You deserve casual Friday comfort every day of the week. Soft and flexible, our 4-way stretch shirts make it easy to look classy.

\$75.00 MSRP

55% polyester/37% recycled polyester/  
8% spandex woven

- UPF 30+ sun protection
- 4-way stretch moves with you
- Ready-to-wear wrinkle-free fabric
- Bonded placket and collar holds shape wash after wash

## Windowpane

2590 | Men's | S-5XL, LT-3XLT

9 BOTTLES RECYCLED\*



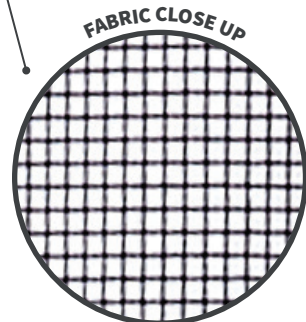
White/Navy | **C**    Black | **N**

2595 | Women's | XS-3XL

8 BOTTLES RECYCLED\*



White/Navy    Black | **N**

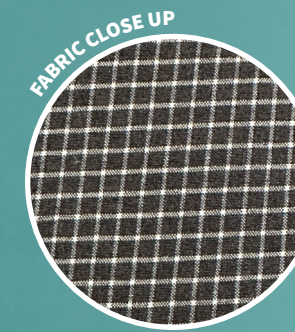


DID YOU KNOW?

Storm Creek is certified



**C** = Core Color    **N** = New Color    \*Max Bottles Per Garment



Soft and superior comfort



Flexible 4-way stretch



Extended cuff opening



NEW COLORS

# Pacesetter Quarter Zip

The shirt that's always down to cuddle.

A best seller for a reason, the Pacesetter begs for touch. This amazing fabric is lusciously soft and fits to a T. It's the shirt that snuggles you back.

\$55.00 MSRP

2340 | Men's | S-5XL, LT-3XLT | 20 BOTTLES RECYCLED\*

Solid: 90% recycled polyester/10% spandex sueded jersey

Heather: 45% recycled polyester/45% polyester/10% spandex sueded jersey



Nutmeg | N

Olive Drab | N

Redwood | N



Dark Heather Gray | C

Light Heather Gray | C

Black (Solid) | C

Indigo | C

Navy | C



Smokey Blue | C

Spruce Green

Dark Heather Gray/Black

Orange

DID YOU KNOW?

Storm Creek has been a proud member of 1% FOR THE PLANET

since 2019



Super soft, lightweight fabric

High-stretch fabric fits every body

UPF 30+ sun protection



NEW COLORS

# Pacesetter Quarter Zip

Style and comfort go paw in paw.

Don't sacrifice one for the other. The Pacesetter proves that looking good is synonymous with feeling good.

\$55.00 MSRP

2345 | Women's | XS-3XL | 18 BOTTLES RECYCLED\*

Solid: 90% recycled polyester/10% spandex sueded jersey

Heather: 45% recycled polyester/45% polyester/10% spandex sueded jersey



High-stretch fabric fits every body

UPF 30+ protection

Super soft, lightweight fabric

Thumbholes (women's)





New style (1891)  
coming late 2023!  
Standard quarter  
zip without placket

# Renewer Quarter Zip

Bamboo looks good time after time.

Make every day pajama day. Affectionately called professional pajamas around our office, the Renewer makes you look great and feel better.

\$60.00 MSRP

1890 | Men's | S-3XL

1895 | Women's | XS-3XL

60% recycled polyester/40% bamboo viscose interlock

- UPF 30+ sun protection
- Bamboo fabric is soft, cozy, and durable
- Naturally anti-microbial properties keep you fresh
- Stylish blade collar (women's)

1890 | Men's | 9 BOTTLES RECYCLED\*



Charcoal

Peri  
Blue

Flame  
Orange

1895 | Women's | 7 BOTTLES RECYCLED\*



Charcoal

Peri  
Blue

Violet  
Purple

**NEW COLORS**

# Bodyguard Quarter Zip

\$70.00 MSRP

2450 | Men's | S-4XL

2455 | Women's | XS-3XL

70% polyester/30% recycled polyester jacquard knit

- UPF 30+ sun protection
- Hidden zippered pocket keeps your personal belongings safe
- Droptail hem for backside coverage (women's)
- Thumbholes (women's)

2450 | Men's | 8 BOTTLES RECYCLED\*



Dark Heather Gray | C Zinc Gray | C Navy | C Peri Blue | N Olive Drab | N

2455 | Women's | 7 BOTTLES RECYCLED\*



Dark Heather Gray | C Zinc Gray | C Navy | C



Olive Drab | N Glacier Blue | N Melon Orange



# Adapter Quarter Zip

\$60.00 MSRP

2420 | Men's | S-4XL

2425 | Women's | XS-3XL

93% recycled polyester/7% spandex smooth face fleece

- Brushed inside for warmth
- Smooth outside for friction-free layering

2420 | Men's

21 BOTTLES RECYCLED\*



Black Navy

2425 | Women's

17 BOTTLES RECYCLED\*



Black Navy



# Founder Half Zip

\$70.00 MSRP

4670 | Men's | S-4XL

4675 | Women's | XS-3XL

47% recycled polyester/50% polyester/3% spandex heather jersey

- Get the look of wool without the scratchy feel
- Stylish half zip makes layering easy
- Droptail hem (women's)

4670 | Men's

10 BOTTLES RECYCLED\*



Jet Light Heather Gray

4675 | Women's

9 BOTTLES RECYCLED\*



Jet Light Heather Gray





**LAYERING TIP**

**Influencer Woven Shirt**  
2590 | Page 18-19

**NEW COLORS**

**Sidekick Quarter Zip**  
Country club chic.

Soft like the Pacesetter, only warmer. Most appropriate for the office or picnic date night, depending on who you want to impress.

**\$75.00 MSRP**  
2440 | Men's | S-4XL  
2445 | Women's | XS-3XL  
44% recycled polyester/44% polyester/  
12% spandex sueded heavy jersey

- Luxuriously soft fabric snuggles you in cloudlike comfort
- Hidden placket for a polished look
- High-stretch fabric moves with you



2440 | Men's | **11 BOTTLES RECYCLED\***



2445 | Women's | **12 BOTTLES RECYCLED\***



**FABRIC CLOSE UP**



**C** = Core Color **N** = New Color \*Max Bottles Per Garment **29**

**NEW COLORS**

# Sidekick Hoodie

Fido's favorite hoodie.

Soft and stylish, this hoodie feels as incredible (and cozy!) as it looks.

\$70.00 MSRP

2690 | Men's | S-4XL

2696 | Women's | XS-3XL

**Solid:** 88% recycled polyester/  
12% spandex sueded heavy jersey

**Heather:** 44% recycled polyester/  
44% polyester/12% spandex sueded heavy jersey

- Luxuriously soft fabric snuggles you in cloudlike comfort
- The perfect weight to wear alone or layer up
- Flattering side slits (women's)
- Oversized boyfriend fit (women's)



**DID YOU KNOW?**

Storm Creek has been **outfitting corporations** and **retailers** for nearly **two decades**



2690 | Men's | 26 BOTTLES RECYCLED\*



Dark Heather Gray | C White (Solid) | N Black (Solid) | N Spruce Green | N Light Heather Gray Navy

2696 | Women's | 26 BOTTLES RECYCLED\*



Dark Heather Gray | C White (Solid) | N Black (Solid) | N Spruce Green Nutmeg | N Glacier Blue



DID YOU KNOW?

## No restricted chemicals

are used in **production**



### NEW COLORS

## Sidekick Crew

Comfier than your favorite sweatshirt.

\$65.00 MSRP

2435 | Women's | XS-3XL

**Solid:** 88% recycled polyester/12% spandex  
sueded heavy jersey

**Heather:** 44% recycled polyester/44% polyester/  
12% spandex sueded heavy jersey

- Luxuriously soft fabric snuggles you in cloudlike comfort
- Flattering side slits
- Cozy, oversized boyfriend fit

2435 | Women's | 22 BOTTLES RECYCLED\*



Black (Solid)

White (Solid) | N

Dark Heather Gray

Balsam Green | N



Oatmeal

Chestnut Brown

Redwood

Glacier Blue

### NEW STYLE

## Sidekick Mock

\$70.00 MSRP

2675 | Women's | XS-3XL

44% recycled polyester/44% polyester/  
12% spandex sueded heavy jersey

- Mock neck silhouette with drawcord for the perfect fit
- Luxuriously soft fabric snuggles you in cloudlike comfort
- High-stretch fabric moves with you

Versatile mock neck silhouette with drawcord



2675 | Women's | 11 BOTTLES RECYCLED\*



Oatmeal | N

Deep Purple | N

Dark Heather Gray | N

N = New Color \*Max Bottles Per Garment



**NEW COLORS**

# Trendsetter Joggers

Real waistbands are so 2019.

These super soft joggers have a high-stretch elastic waistband making them perfect for going out or hanging out.

\$65.00 MSRP

2993 | Men's | S-3XL

2994 | Women's | XS-3XL

**Solid:** 88% recycled polyester/12% spandex sueded jersey

**Heather:** 44% recycled polyester/44% polyester/12% spandex sueded jersey

- Soft feel guarantees comfort
- Elastic waistband with drawcord for the perfect fit
- Front pockets (women's)
- Men's inseam- 29" (size large)
- Women's inseam- 27" (size medium)

2993 | Men's | 26 BOTTLES RECYCLED\*



Black (Solid) | C



Light Heather Gray | N

2994 | Women's | 20 BOTTLES RECYCLED\*



Black (Solid) | C



Dark Heather Gray

**LAYERING TIP**

## Pacesetter Quarter Zip

2340/2345 | Page 20-23



Super soft, midweight

**POCKET CLOSE UP**



Zippered back pocket is ideal for wallet or phone (men's)

NEW COLORS

# Maverick Button-Up

\$90.00 MSRP

2960 | Men's | S-4XL

2965 | Women's | XS-3XL

60% cotton/40% recycled polyester interlock waffle

- Unique waffle texture stands out
- Cotton blend is soft and luxurious
- Premium, pre-shrunk cotton for long-lasting comfort

2960 | Men's | 16 BOTTLES RECYCLED\*



Black | C Olive Drab | N Medium Gray Heather | N



Marine Blue Spruce Green

2965 | Women's | 13 BOTTLES RECYCLED\*



Black | C Olive Drab | N Marshmallow | N Marine Blue



Chestnut Brown Arctic Blue

DID YOU KNOW?

Our fabrics are **constantly transitioning** to even more **sustainable alternatives**



# Maverick Quarter Zip

A textural way to stay toasty.

Capture the warm feels of your favorite cozy day outfit. Maverick's touchable waffle outside is paired with a dreamy jersey inside.

\$90.00 MSRP

2920 | Men's | S-5XL, LT-3XLT

2925 | Women's | XS-3XL

60% cotton/40% recycled polyester interlock waffle

- Unique waffle texture stands out
- Cotton blend is soft and luxurious
- Premium, pre-shrunk cotton for long-lasting comfort

2920 | Men's | 16 BOTTLES RECYCLED\*



Jet/Jet | C Navy/Jet | C Platinum | C Black | C

2925 | Women's | 13 BOTTLES RECYCLED\*



Jet/Jet | C Navy/Jet | C Platinum | C Black | C

# Architect

Diamonds are a shirt's best friend.

Architect combines stand-out quilted detailing with a luxuriously soft interlock fabric.

\$75.00 MSRP

2640 | Men's | S-4XL

2645 | Women's | XS-3XL

Interlock: 40% polyester/40% recycled polyester/  
15% rayon/5% spandex

Quilt: 80% polyester/20% recycled polyester

- Stylish diamond quilting
- Smooth interior for friction-free layering
- High stretch fabric moves with you

## Quarter Zip

2640 | Men's | 12 BOTTLES RECYCLED\*



Gray | C

Navy | C

Black | C

Smokey  
Blue

## Full Zip

2645 | Women's | 9 BOTTLES RECYCLED\*



Gray | C

Navy | C

Droptail hem (women's)

38 C = Core Color \*Max Bottles Per Garment

DID YOU KNOW?

All products are **designed** in

**Minnesota**



“ Love the color and fabric. Washes beautifully. Perfect for any occasion!!

Women's Pacesetter is found on Pg. 22



Front Runner Vest | Pg. 58



Sidekick Hoodie | Pg. 30 \*Apparel not made for dogs



Front Runner Jacket | Pg. 59

“ Love this pullover! It's water repellent but still very breathable. Great fit all around.

Men's Idealist Half-Zip Wind Shirt is found on Pg. 73



Naturalist | Pg. 14



Artisan Shirt Jacket | Pg. 50

Aviator Jacket | Pg. 52

“ The perfect lightweight sweatshirt to throw on over anything or just wear by itself. I put it on the moment I bought it and wore it for 3 days straight!

Men's Sightseer Long Sleeve Hoodie is found on Pg. 6

Influencer Winduppane | Pg. 18



“ Love, love, love! I've been looking for a well-designed women's dress shirt, and this is it!

Women's Influencer - Gingham Shirt is found on Pg. 17



Summit Jacket | Pg. 44



“ This is my THIRD Storm Creek vest – as always, well-made and perfect fit! I use my vest year-round; perfect for adding layers under as the temps drop.

Men's Front Runner Vest is found on Pg. 58

# Stabilizer Jacket

Smooth operator.

\$75.00 MSRP

3510 | Men's | S-4XL

3515 | Women's | XS-3XL

Solid: 100% recycled polyester smooth face fleece

Heather: 50% recycled polyester/50% polyester smooth face fleece

- Brushed interior keeps you cozy
- Smooth exterior is perfect for layering
- Hidden, zippered front pockets keep belongings safe
- Droptail hem for backside coverage (women's)

3510 | Men's | 28 BOTTLES RECYCLED\*



Black (Solid) | C    Dark Heather Gray | C    Navy | C

3515 | Women's | 24 BOTTLES RECYCLED\*



Black (Solid) | C    Dark Heather Gray | C    Navy | C

Stylish and flattering back yoke detail (women's)

LAYERING TIP

Sightseer Tee

1565 | Page 8-9

Trendsetter Joggers

2994 | Page 34-35



3515 Black

NEW COLORS

# Collaborator Quarter Zip

The shirt that works with you.

\$75.00 MSRP

4650 | Men's | S-4XL

48% polyester/32% recycled polyester/15% rayon/5% spandex

4650 | Men's | 13 BOTTLES RECYCLED\*



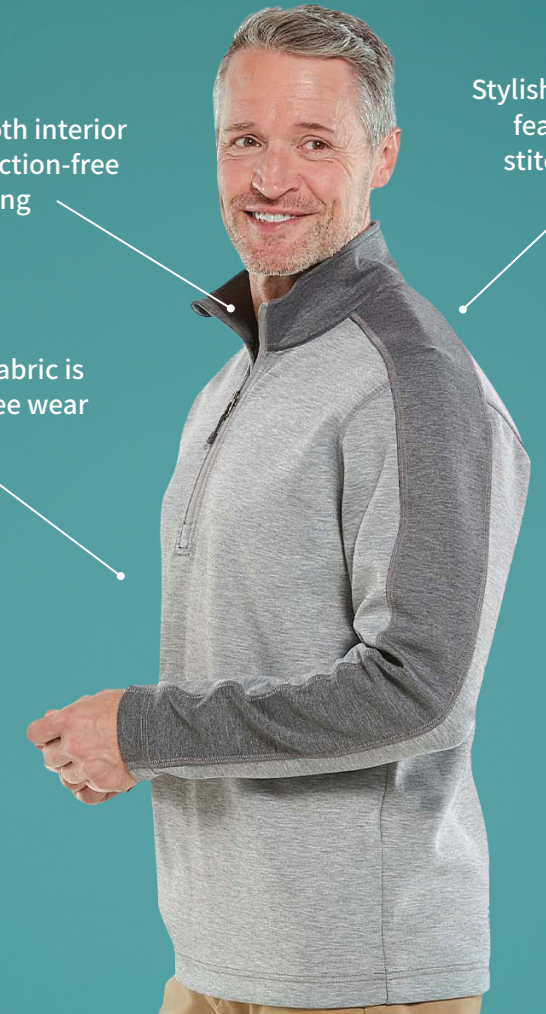
Light Heather Gray | C    Dark Heather Gray | C    Oatmeal | N    Black | N    Smokey Blue

C = Core Color    N = New Color    \*Max Bottles Per Garment

Smooth interior for friction-free layering

Stylish arm stripe features cover stitching detail

Interlock fabric is wrinkle-free wear after wear



NEW STYLE

# Summit Jacket

At the top, it's anything but lonely.

A modern take on the classic fleece jacket. Designed to keep you warm at the summit and cozy après ski.

\$75.00 MSRP

4360 | Men's | S-4XL

4365 | Women's | XS-3XL

100% recycled polyester

- High-quality, bonded fleece provides heavyweight comfort
- Sherpa fleece interior keeps you comfortable and warm
- Your new go-to fleece that can be layered up or worn solo

4360 | Men's | 40 BOTTLES RECYCLED\*



Black | C N    Navy | C N    Olive Drab | N    Smokey Blue | N

4365 | Women's | 37 BOTTLES RECYCLED\*



Black | C N    Navy | C N    Deep Purple | N    Sagebrush Green | N



Fitted hood for warmth (women's)



FABRIC CLOSE UP



Cozy sherpa-lined pockets

Super soft  
sweaterfleece  
keeps you  
comfortable  
and warm



Zippered  
chest pocket  
(men's)



Zippered sleeve  
pocket (women's)



On-seam zippered  
pockets keep personal  
belongings safe

Modern  
silhouette  
elevates  
your look

Thumbholes  
(women's)



**NEW COLORS**

# Overachiever Jacket

The valedictorian of your closet.

Overachiever serves up the warmth of wool with the comfort of your favorite old college hoodie (only classier).

\$95.00 MSRP

4620 | Men's | S-5XL, LT-3XLT

4625 | Women's | XS-3XL

80% recycled polyester/20% polyester sweaterfleece (345 GSM)

4620 | Men's | 42 BOTTLES RECYCLED\*



4625 | Women's | 33 BOTTLES RECYCLED\*



Platinum | C Cinder | C Navy | C



Black | C, N Balsam Green | N Alaskan Blue | N



Glacier Blue/Platinum Meadow Green



**NEW COLORS**

# Overachiever Pullover

Made you look.

Get the classic look of wool without the uncomfortable scratch. Our super soft sweaterfleece hugs you in warmth that's ideal for everything from running errands to lounging on the couch.

- Stylish snap front design
- Super soft sweaterfleece keeps you comfortable and warm

**\$90.00 MSRP**

**4640** | Unisex | XXS-4XL

**4646** | Women's | XS-3XL

80% recycled polyester/20% polyester sweaterfleece (345 GSM)

**4640** | Unisex | **29 BOTTLES RECYCLED\***



Platinum | C Cinder | C Nutmeg | N

**NEW STYLE**

**4646** | Women's | **24 BOTTLES RECYCLED\***



Platinum | N Balsam Green | N



**4646 Balsam Green**

**4630 Black**



**NEW COLORS**

# Overachiever Vest

Find your inner fleece.

**\$85.00 MSRP**

**4630** | Men's | S-4XL

**4635** | Women's | XS-3XL

80% recycled polyester/20% polyester sweaterfleece (345 GSM)

- Super soft sweaterfleece keeps you comfortable and warm
- Layer up to keep your core warm on the coldest of days
- Zippered chest and hand pockets keep personal belongings safe

**4630** | Men's | **26 BOTTLES RECYCLED\***



Cinder | C Platinum | C Navy | C Black | C N

**4635** | Women's | **22 BOTTLES RECYCLED\***



Cinder | C Platinum | C Navy | C Black | C N



Balsam Green | N Glacier Blue Lavender

**4640 Nutmeg**



NEW STYLE

# Artisan Shirt Jacket

Crafted for life on the go.

From date night to early morning dog walks, the Artisan Shacket allows you to make a confident fashion statement. A modern take on classic street style, the Artisan is both versatile and stylish.

\$110.00 MSRP

3070 | Men's | S-4XL

3075 | Women's | XS-3XL

Shell: 100% recycled polyester fine denier woven.

Insulation: 65% polyester/35% recycled polyester

**THERMOLITE**

- 100 GSM Thermolite® insulation keeps you warm
- Modern workwear inspired shacket
- Windproof and water-resistant fabric protects you from the elements
- Chest pocket with hidden snap

3070 | Men's | 21 BOTTLES RECYCLED\*



Black | C N

Fatigue Green | N

Olive Drab | N

3075 | Women's | 19 BOTTLES RECYCLED\*



Black | C N

Fatigue Green | N

Nutmeg | N

C = Core Color N = New Color \*Max Bottles Per Garment





NEW STYLE

# Aviator Jacket

Upgrade your wardrobe to first class.

A fresh take on your favorite jacket from the good ol' days. The Aviator Bomber is your boarding pass to elevate every outfit.

\$105.00 MSRP

3050 | Men's | S-4XL

3055 | Women's | XS-3XL

Shell: 100% recycled polyester fine denier woven.

Insulation: 65% polyester/35% recycled polyester

**THERMOLITE**

- 60 GSM Thermolite® insulation keeps you warm
- Classic bomber silhouette
- Stretch rib collar, cuffs and bottom band
- Inside zippered security pocket

C = Core Color N = New Color \*Max Bottles Per Garment



3050 | Men's | 18 BOTTLES RECYCLED\*



Black | C N

Fatigue Green | N

Navy | C N

3055 | Women's | 14 BOTTLES RECYCLED\*



Black | C N

Fatigue Green | N

Navy | C N



INTRODUCING

# The NEW Traveler Matte Collection

60 GSM Thermolite® insulation

Windproof and water-resistant fabric

PACKABLE POUCH

NEW STYLE  
MATTE FINISH

## Traveler Vest

Make packing (and unpacking) a breeze.

Chilly nights and chilly flights- you've met your match. Lightweight and easily packable, the Traveler is always on your packing list.

\$90.00 MSRP

3150D | Men's | S-4XL

3155D | Women's | XS-3XL

Shell: 100% recycled polyester fine denier woven  
Insulation: 65% polyester/35% recycled polyester

**THERMOLITE**

3150D | Men's | 17 BOTTLES RECYCLED\*



Black | C N | Navy | C N | Jet | C N | Platinum | N

3155D | Women's | 15 BOTTLES RECYCLED\*



Black | C N | Navy | C N | Jet | C N | Platinum | N

Packs into right pocket for easy travel

Adjustable, drawcord hem seals in warmth

Matte finish with PFAS free fabric

NEW STYLE  
MATTE FINISH

## Traveler Jacket

\$110.00 MSRP

3140D | Men's | S-4XL

3145D | Women's | XS-3XL

Shell: 100% recycled polyester fine denier woven  
Insulation: 65% polyester/35% recycled polyester

**THERMOLITE**

- 60 GSM Thermolite® insulation is lightweight and warm
- Packs into right pocket for easy travel
- Windproof and water-resistant fabric blocks out the elements

3140D | Men's | 22 BOTTLES RECYCLED\*



Black | C N | Navy | C N | Jet | C N

3145D | Women's | 21 BOTTLES RECYCLED\*



Black | C N | Navy | C N | Jet | C N

GLOSSY FINISH

# Traveler Vest

Leader of the pack.

\$90.00 MSRP

3150 | Men's | S-4XL

3155 | Women's | XS-3XL

Shell: 60% polyester/40% recycled polyester fine denier woven

Insulation: 65% polyester/35% recycled polyester

**THERMOLITE®**

- 60 GSM Thermolite® insulation is lightweight and warm
- Packs into right pocket for easy travel
- Windproof and water-resistant fabric blocks out the elements
- Adjustable, drawcord hem seals in warmth
- Glossy finish

3150 | Men's | 4 BOTTLES RECYCLED\*



Black | C

Navy | C

Nickel

3155 | Women's | 3 BOTTLES RECYCLED\*



Black | C

Navy | C

Nickel

GLOSSY FINISH

# Traveler Jacket

\$110.00 MSRP

3140 | Men's | S-4XL

3145 | Women's | XS-3XL

Shell: 60% polyester/40% recycled polyester fine denier woven

Insulation: 65% polyester/35% recycled polyester

**THERMOLITE®**

- 60 GSM Thermolite® insulation is lightweight and warm
- Packs into right pocket for easy travel
- Windproof and water-resistant fabric blocks out the elements
- Adjustable, drawcord hem seals in warmth
- Glossy finish

3140 | Men's | 5 BOTTLES RECYCLED\*



Black | C

Navy | C

Nickel

3145 | Women's | 5 BOTTLES RECYCLED\*



Black | C

Navy | C

Nickel





# Front Runner Vest

Still a step ahead.

A forever favorite, this is not your typical puffy layer. Stay warm without being weighed down.

\$90.00 MSRP

3120 | Men's | S-5XL, LT-3XLT

3125 | Women's | XS-3XL

Shell: 60% polyester/40% recycled polyester fine denier woven

Insulation: 65% polyester/35% recycled polyester

**THERMOLITE**

- 120 GSM of Thermolite® insulation keeps you warm
- The perfect layer to have at the ready no matter the time of year
- Stylish, 1-inch quilt pattern evenly distributes insulation
- Draw cord at hem for personal fit

3120 | Men's | 7 BOTTLES RECYCLED\*



Black | Navy | Titanium | Jet/Black |

3125 | Women's | 6 BOTTLES RECYCLED\*



Black | Navy | Titanium |



Jet/Black | Platinum | White

= Core Color \*Max Bottles Per Garment

DID YOU KNOW?

Storm Creek's CEO was selected as the **Advertising Speciality Institute's Bess Cohn**

**Humanitarian of the Year**

in 2023



# Front Runner Jacket

\$115.00 MSRP

3160 | Men's | S-5XL, LT-3XLT

3165 | Women's | XS-3XL

Shell: 60% polyester/40% recycled polyester fine denier woven  
Insulation: 65% polyester/35% recycled polyester

**THERMOLITE**

- 120 GSM of Thermolite® insulation keeps you warm
- Stylish, 1-inch quilt pattern evenly distributes insulation
- Draw cord at hem locks in heat and provides a perfect fit
- Premium comfort snow cuffs block out the elements

3160 | Men's | 11 BOTTLES RECYCLED\*



Black | Jet | Navy | Jet/Black |

3165 | Women's | 10 BOTTLES RECYCLED\*



Black | Jet | Navy | Jet/Black |

# Discoverer Vest

It's what's on the inside that counts.

A smooth take on a classic vest, the Discoverer tucks quilted insulation inside a sleek exterior.

\$90.00 MSRP

3000 | Men's | S-3XL

3005 | Women's | XS-3XL

Shell: 60% polyester/40% recycled polyester fine denier woven

Insulation: 65% polyester/35% recycled polyester

**THERMOLITE**

- 100 GSM of Thermolite® insulation keeps you warm
- Sleek exterior, quilted interior
- Windproof and water-resistant fabric blocks out the elements

3000 | Men's | 5 BOTTLES RECYCLED\*



Black | C

Navy | C

Olive Green

3005 | Women's | 4 BOTTLES RECYCLED\*



Black | C

Navy | C

Olive Green

Glacier Blue

## DID YOU KNOW?

Our first eco-made jacket was introduced

**in 2012**



## LAYERING TIP

**Maverick Button-Up**

2965 | Page 36

**Show-off Pom Hat**

1030 | Page 74



3-piece, adjustable hood for custom fit and warmth

Sleek exterior, quilted interior

Windproof and water-resistant fabric

Premium knit snow cuffs for comfort

## NEW STYLE

# Innovator II Jacket

Booked & busy (even in the cold).

The perfect jacket for the person who's on-the-go, no matter the weather. The right amount of insulation keeps you comfortably warm and the sleek exterior stands the test of time.

\$125.00 MSRP

3090 | Men's | S-4XL

3095 | Women's | XS-3XL

Shell: 100% recycled polyester fine denier woven

Insulation: 65% polyester/35% recycled polyester

**THERMOLITE**

- 100 GSM of Thermolite® insulation keeps you warm

3090 | Men's

25 BOTTLES RECYCLED\*



Black | C N

3095 | Women's

22 BOTTLES RECYCLED\*



Black | C N

LAYERING TIP

Sidekick Hoodie

2696 | Page 30-31

Trendsetter Joggers

2994 | Page 34-35



Large mesh pocket for hood or accessories

Microsuede lining for added softness and warmth

Detachable hood

Fully seam sealed to keep water out and sewn to perfection to look like a stitchless garment

Drawcord at hem

# Defender Jacket

Conquer the cold.

This is an intense jacket made for intense weather. Even when the temperature dips below zero, the Defender makes everyday a good day to get outside.

\$190.00 MSRP

6320 | Men's | S-5XL, LT-3XL

6325 | Women's | XS-3XL

Shell: 50% recycled polyester/50% polyester woven

Insulation: 65% polyester/35% recycled polyester



6320 | Men's

19 BOTTLES RECYCLED\*



Black

Dark Heather Gray

6325 | Women's

16 BOTTLES RECYCLED\*



Black

Dark Heather Gray

- 160 GSM of Thermolite insulation keeps you warm on the coldest days
- 10K/10K waterproof/breathable fabric blocks out the elements while keeping you comfortable



# Trailblazer Jacket

\$80.00 MSRP

4000 | Men's | S-5XL, LT-2XLT

4005 | Women's | XS-3XL

Outer Layer: 94% recycled polyester/6% spandex woven, 8,000mm/1,000mm waterproof/breathable

Inner Layer: 100% recycled polyester microfleece

4000 | Men's | 31 BOTTLES RECYCLED\*



Black | C Jet/Black | C

4005 | Women's | 28 BOTTLES RECYCLED\*



Black | C Jet/Black | C

Breathable exterior provides all-day comfort

8K/1K waterproof outer shell



Fleece lined softshell

High stretch fabric for ease of movement

4000 Jet/Black

NEW COLORS

# Trailblazer Vest

\$70.00 MSRP

4050 | Men's | S-5XL, LT-3XLT

4055 | Women's | XS-3XL

Outer Layer: 94% recycled polyester/6% spandex woven, 8,000mm/1,000mm waterproof/breathable

Inner Layer: 100% recycled polyester microfleece

- Fleece-lined softshell
- 8K/1K waterproof outer shell
- High-stretch face
- Breathable

4050 | Men's | 22 BOTTLES RECYCLED\*



Black | C Jet/Black | C Navy | N

4055 | Women's | 20 BOTTLES RECYCLED\*



Black | C Jet/Black | C

# Guardian Jacket

\$110.00 MSRP

4200 | Men's | S-5XL, LT-3XLT

4260 | Women's | XS-3XL

Outer Layer: 86% recycled polyester/14% spandex

Inner Layer: 50% recycled polyester/50% polyester velvet

- 3-layer construction
- Waterproof, breathable exterior
- Hidden snow cuff

4200 | Men's | 28 BOTTLES RECYCLED\*



Black/Black | C Navy/Navy | C Tar/Black | C Bright Red/Black

4260 | Women's | 23 BOTTLES RECYCLED\*



Black/Black | C Navy/Navy | C Tar/Black | C Bright Red/Black

FABRIC CLOSE UP

Velvet-lined softshell



Droptail (women's)

**DID YOU KNOW?**

Our fabric suppliers are

**bluesign® and  
Oeko-Tex® certified**



**OEKO-TEX®**  
CONFIDENCE IN TEXTILES  
**STANDARD 100**

# Explorer Jacket+ Pants

Downpour ready.

## Rain Jacket

\$140.00 MSRP  
52% polyester/48% recycled polyester

- 20K/20K waterproof/breathable
- 2.5 layer construction for comfort against skin
- 4-way stretch fabric moves with you
- Fully seam sealed to block out the elements
- Waterproof zippered pockets keep your personal belongings safe
- Hood folds into collar for convenience
- Ready for the heaviest, longest rain

6520 | Men's | S-5XL, LT-3XLT

10 BOTTLES RECYCLED\*



Black | Navy

6525 | Women's | XS-3XL

9 BOTTLES RECYCLED\*



Black | Navy

## Side Zip Rain Pants

\$110.00 MSRP  
52% polyester/48% recycled polyester

- 20K/20K waterproof/breathable
- 2.5 layer construction for comfort against skin
- 4-way stretch fabric moves with you
- Fully seam sealed to block out the elements
- Waterproof front pockets keep your personal belongings safe
- Adjustable hem width for the perfect fit
- Ready for the heaviest, longest rain
- Full length side zipper

6521 | Men's | S-3XL

8 BOTTLES RECYCLED\*



Black Navy

6524 | Women's | XS-3XL

7 BOTTLES RECYCLED\*



Black Navy

# Voyager Jacket + Pants

Packable and made to move.

Shell: 100% nylon 380t woven mini ripstop  
Lining (Jacket only): 100% polyester mesh

- 5K/5K waterproof/breathability
- Conveniently packs into right pocket for easy use
- Waterproof zippered pockets keep your personal belongings safe
- Ready for moderate rain
- Drawcord hood for the perfect fit

**OEKO-TEX®**  
CONFIDENCE IN TEXTILES  
**STANDARD 100**



# Commuter Jacket

All-season reliability.

\$135.00 MSRP

6300 | Men's | S-4XL

6305 | Women's | XS-3XL

Shell: 50% recycled polyester/50% polyester

Lining: 100% polyester mesh

- 10K/10K waterproof/breathability
- Drawcord at hem locks out water and provides the perfect fit
- Easy access to large inside pocket
- Ready for light rain

6300 | Men's | **11 BOTTLES RECYCLED\***



Black

Navy

6305 | Women's | **9 BOTTLES RECYCLED\***



Black

Navy

Fully removable hood



## Rain Jacket

\$80.00 MSRP

6560 | Men's | S-4XL



Black/Ash | **C** Jet/Navy | **C** Navy/Ash | **C**

## Rain Pants

\$65.00 MSRP

6561 | Men's | S-4XL



Black

6565 | Women's | XS-3XL



Black/Ash | **C** Jet/Navy | **C** Navy/Ash | **C**

6564 | Women's | XS-3XL



Black



Hood rolls into collar

# Idealist Windbreaker

Ride into the wind and take life by storm.

Own the course or the trail with our windproof and water-resistant Idealist jacket collection.

60% polyester/40% recycled polyester fine denier woven ripstop

- Wind and water-resistant fabric protect you from the elements
- High stretch, feather-light feel
- Long-lasting, ripstop finish
- Side slits for breathability
- Droptail hem for backside coverage (women's)



## DID YOU KNOW?

Each month, we upcycle approximately

**500,000 plastic bottles**

turning them into our high-quality product



## Hooded Windbreaker

\$75.00 MSRP

6290 | Men's | S-4XL | 4 BOTTLES RECYCLED\*



Navy/Platinum Jet/Platinum Black

6295 | Women's | XS-3XL | 4 BOTTLES RECYCLED\*



Navy/Platinum Jet/Platinum Black Ice Blue

## Windbreaker

\$75.00 MSRP

6240 | Men's | S-4XL

4 BOTTLES RECYCLED\*



Black Platinum Navy

6245 | Women's | XS-3XL

3 BOTTLES RECYCLED\*



Black Platinum

Roll-up hood  
(Hooded Windbreaker only)



6240 Platinum



Stylish half zip makes layering simple

6280 Jet/Black



Elastic cuff for ease of movement

6280 Jet/Black

**LAYERING TIP**

**Influencer Woven Shirt**  
2570 | Page 16-17



6260 Black

Drawcord at hem for the perfect fit

# Idealist Windshirt + Vest

A breath of fresh air.

Shell: 60% polyester/40% recycled polyester fine denier woven ripstop  
Lining (vest only): 100% polyester mesh

- Wind and water-resistant fabric protect you from the elements
- High stretch, feather-light feel
- Long-lasting, ripstop finish
- Zippered chest pocket keeps personal belongings safe

## Windshirt

\$70.00 MSRP

6280 | Men's | S-4XL | 4 BOTTLES RECYCLED\*



Black

Platinum

Navy

Olympic Blue/Black

Jet/Black

## Vest

\$70.00 MSRP

6260 | Men's | S-4XL

3 BOTTLES RECYCLED\*



Black

Platinum

Navy

6265 | Women's | XS-3XL

2 BOTTLES RECYCLED\*



Black

Platinum

NEW COLORS

# Accessories

## Explorer Belt Bag

\$30.00 MSRP

- Credit card pockets
- 2 mesh pockets
- Main pocket for larger personal items
- Backside exterior zippered pocket

1060 | Unisex | One Size



Black | C



## Catalyst Beanie

\$20.00 MSRP

1032 | Unisex | S/M, L/XL

2 BOTTLES RECYCLED\*



Black | N

Platinum

## Catalyst Mittens

\$30.00 MSRP

1050 | Unisex | S/M, L/XL

2 BOTTLES RECYCLED\*



Platinum

## Show-off Pom Hat

\$25.00 MSRP

1030 | Women's | One Size



Black

Heather Gray

Marshmallow

1060  
Waist/shoulder strap with adjustable buckle



1030  
Soft and chunky cable knit fabric

# Private Label Front Runner

Low Minimum, Quick Turn, Tagless Vest or Jacket

## WHAT'S INCLUDED

1. Start with our 100% tagless black vest or jacket (12 piece minimum).
2. Choose one of sixteen zipper pull colors. Mix & match for a custom look!
3. We'll ship to your decorator of choice.

## Vest

\$100.00 MSRP

3120-MTO | Men's | S-5XL, LT-3XLT

7 BOTTLES RECYCLED\*

3125-MTO | Women's | XS-3XL

6 BOTTLES RECYCLED\*

## Jacket

\$125.00 MSRP

3160-MTO | Men's | S-5XL, LT-3XLT

11 BOTTLES RECYCLED\*

3165-MTO | Women's | XS-3XL

10 BOTTLES RECYCLED\*

Shell: 60% polyester/40% recycled polyester fine denier woven  
Insulation: 65% polyester/35% recycled polyester

**THERMOLITE**



Black Only

Black Only

# ZIPPERIZE®

## YOUR BRAND

Customize any Storm Creek style with 16 different zipper pull colors.



Your custom zipper pulls will ship with your order. Zipper pulls will not be applied prior to shipment. 12 piece zipper pull minimum.

Men's **Sightseer Hoodie** Women's

\$50.00 MSRP  
1570 | Men's • 1575 | Women's  
Page 6

Men's **Sightseer Long Sleeve Tee** Women's

\$40.00 MSRP  
1560 | Men's • 1565 | Women's  
Page 8

Men's **Optimist Polo** Women's

\$50.00 MSRP  
1810 | Men's • 1855 | Women's  
Page 10

Men's **Renewer Polo** Women's

\$55.00 MSRP  
1870 | Men's  
Page 11

Men's **Activator Polo** Women's

\$55.00 MSRP  
1860 | Men's • 1865 | Women's  
Page 12

Men's **Visionary II Polo** Women's

\$50.00 MSRP  
1821 | Men's • 1825 | Women's  
Page 13

Men's **Naturalist Short Sleeve** Women's

\$85.00 MSRP  
2480 | Men's • 2485 | Women's  
Page 14

Men's **Naturalist Long Sleeve** Women's

\$90.00 MSRP  
2550 | Men's • 2555 | Women's  
Page 15

Men's **Influencer Solid** Women's

\$75.00 MSRP  
2580 | Men's • 2585 | Women's  
Page 17

Men's **Influencer Gingham** Women's

\$75.00 MSRP  
2570 | Men's • 2575 | Women's  
Page 17

Men's **Influencer Microplaid** Women's

\$75.00 MSRP  
2560 | Men's • 2565 | Women's  
Page 17

Men's **Influencer Windowpane** Women's

\$75.00 MSRP  
2590 | Men's • 2595 | Women's  
Page 18

Men's **Pacesetter Quarter Zip** Women's

\$55.00 MSRP  
2340 | Men's • 2345 | Women's  
Page 20-23

Men's 1890 **Renewer Quarter Zip** Women's

\$60.00 MSRP  
1890 | Men's • 1895 | Women's  
Page 25

Men's **Bodyguard Quarter Zip** Women's

\$70.00 MSRP  
2450 | Men's • 2455 | Women's  
Page 26

Men's **Adapter Quarter Zip** Women's

\$60.00 MSRP  
2420 | Men's • 2425 | Women's  
Page 27

Men's **Founder Half Zip** Women's

\$70.00 MSRP  
4670 | Men's • 4675 | Women's  
Page 27

Men's **Sidekick Quarter Zip** Women's

\$75.00 MSRP  
2440 | Men's • 2445 | Women's  
Page 29

Men's **Sidekick Hoodie** Women's

\$70.00 MSRP  
2690 | Men's • 2696 | Women's  
Page 30

Men's **Sidekick Crew** Women's

\$65.00 MSRP  
2435 | Women's  
Page 33

Men's **Sidekick Mock** Women's

\$70.00 MSRP  
2675 | Women's  
Page 33

Men's **Trendsetter Joggers** Women's

\$65.00 MSRP  
2993 | Men's • 2994 | Women's  
Page 34

Men's **Maverick Button-Up** Women's

\$90.00 MSRP  
2960 | Men's • 2965 | Women's  
Page 36

Men's **Maverick Quarter Zip** Women's

\$90.00 MSRP  
2920 | Men's • 2925 | Women's  
Page 37

Men's **Architect Quarter/Full Zip** Women's

\$75.00 MSRP  
2640 | Men's • 2645 | Women's  
Page 38

Men's **Stabilizer Jacket** Women's

\$75.00 MSRP  
3510 | Men's • 3515 | Women's  
Page 42

Men's **Collaborator Quarter Zip** Women's

\$75.00 MSRP  
4650 | Men's  
Page 43

Men's **Summit Jacket** Women's

\$75.00 MSRP  
4360 | Men's • 4365 | Women's  
Page 44

Men's **Overachiever Jacket** Women's

\$95.00 MSRP  
4620 | Men's • 4625 | Women's  
Page 46-47

Unisex **Overachiever Pullover** Women's

\$90.00 MSRP  
4640 | Unisex • 4646 | Women's  
Page 48

Men's **Overachiever Vest** Women's

\$85.00 MSRP  
4630 | Men's • 4635 | Women's  
Page 49

Men's **Artisan Shirt Jacket** Women's

\$110.00 MSRP  
3070 | Men's • 3075 | Women's  
Page 50

Men's **Aviator Jacket** Women's

\$105.00 MSRP  
3050 | Men's • 3055 | Women's  
Page 52-53

Men's **Traveler Vest - Matte** Women's

\$90.00 MSRP  
3150D | Men's • 3155D | Women's  
Page 54

Men's **Traveler Jacket - Matte** Women's

\$110.00 MSRP  
3140D | Men's • 3145D | Women's  
Page 55

Men's **Traveler Vest - Glossy** Women's

\$90.00 MSRP  
3150 | Men's • 3155 | Women's  
Page 56

Men's **Traveler Jacket - Glossy** Women's

\$110.00 MSRP  
3140 | Men's • 3145 | Women's  
Page 57

Men's **Front Runner Vest** Women's

\$90.00 MSRP  
3120 | Men's • 3125 | Women's  
Page 58

Men's **Front Runner Jacket** Women's

\$115.00 MSRP  
3160 | Men's • 3165 | Women's  
Page 59

Men's **Discoverer Vest** Women's

\$90.00 MSRP  
3000 | Men's • 3005 | Women's  
Page 60

Men's **Innovator II Jacket** Women's

\$125.00 MSRP  
3090 | Men's • 3095 | Women's  
Page 61

Men's **Defender Jacket** Women's

\$190.00 MSRP  
6320 | Men's • 6325 | Women's  
Page 63

Men's **Trailblazer Jacket** Women's

\$80.00 MSRP  
4000 | Men's • 4005 | Women's  
Page 64

Men's **Trailblazer Vest** Women's

\$70.00 MSRP  
4050 | Men's • 4055 | Women's  
Page 65

Men's **Guardian Jacket** Women's

\$110.00 MSRP  
4200 | Men's • 4260 | Women's  
Page 65

Men's **Explorer Jacket** Women's

\$140.00 MSRP  
6520 | Men's • 6525 | Women's  
Page 66

Men's **Explorer Side Zip Rain Pant** Women's

\$110.00 MSRP  
6521 | Men's • 6524 | Women's  
Page 67

Men's **Voyager Jacket** Women's

\$80.00 MSRP  
6560 | Men's • 6565 | Women's  
Page 68

Men's **Voyager Rain Pants** Women's

\$65.00 MSRP  
6561 | Men's • 6564 | Women's  
Page 68

Men's **Commuter Jacket** Women's

\$135.00 MSRP  
6300 | Men's • 6305 | Women's  
Page 69

Men's **Idealist Hooded Windbreaker** Women's

\$75.00 MSRP  
6290 | Men's • 6295 | Women's  
Page 70

Men's **Idealist Windbreaker** Women's

\$75.00 MSRP  
6240 | Men's • 6245 | Women's  
Page 70

Men's **Idealist Windshirt** Women's

\$70.00 MSRP  
6280 | Men's  
Page 73

Men's **Idealist Vest** Women's

\$70.00 MSRP  
6260 | Men's • 6265 | Women's  
Page 73

**C** = Core Color In Stock Year-Round  
These colors are safe to place in a reordering program.\*

**N** = New Color  
These colors are new for 2024.\*  
\*Arrival dates and size offering per color may vary.  
Please visit distributor.stormcreek.com for availability.

# Better Fit

Men's	S	M	L	XL	2XL	3XL	4XL	5XL
Your Chest	36-38	39-41	42-44	46-48	50-52	54-56	58-60	62-64
Your Waist	29-31	32-34	35-37	38-41	42-45	46-50	51-54	55-58
Your Hip	35-37	38-40	41-43	44-46	47-49	51-53	55-57	59-61
Your Sleeve Length	33	34	35	36	36	36½	37½	38
Your Inseam	32	32	32½	33	33½	33½	33½	33½
Your Neck	15	15	16½	17½	18½	19½	20½	21½

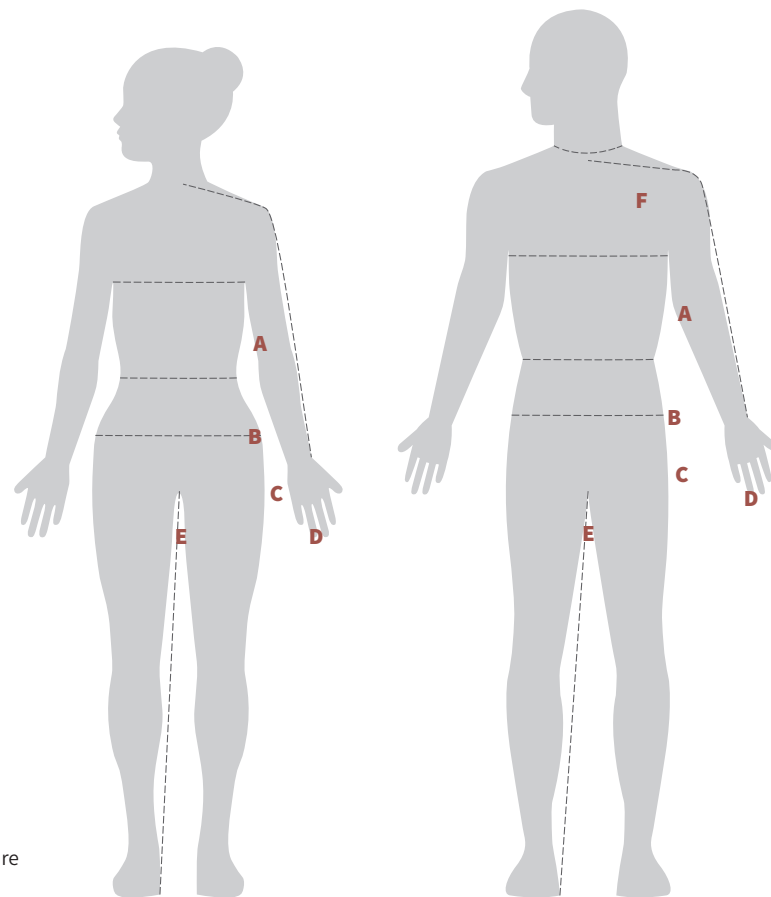
\*Styles offered in Tall sizes have 2" in additional body length and 1½" in additional sleeve length.

Women's	XS	S	M	L	XL	2XL	3XL
Your Chest	32-33	34-35	36-38	39-41	42-44	46-48	50-52
Your Waist	24-25	26-27	28-30	32-34	36-38	40-42	44-46
Your Hip	34-36	36-38	38-40	41-43	44-46	48-50	52-54
Your Sleeve Length	30	30¾	31½	32¼	33	33½	34
Your Inseam	30½	32	32	32	32½	32½	32½
Numeric Size	2	4/6	8/10	12/14	16/18	20/22	24/26

Sizes listed are body measurements, not garment measurements. Measurements are displayed in inches.

## How To Measure Your Body

- A — Chest:** Measure around the fullest part, keeping the measuring tape horizontal.
- B — Waist:** Measure around the narrowest part of waist (typically the small of your back and where body bends side to side), keeping the measuring tape horizontal.
- C — Hips:** Measure around the fullest part of your hips, keeping the measuring tape horizontal.
- D — Sleeve Length:** With arm relaxed at side and slightly bent, measure from the center back neck, across shoulder to elbow, and down to wrist.
- E — Inseam:** Measure from the top of your inner leg along the inside seam to the bottom of your leg.
- F — Neck (Men):** Measure around the base of your neck.



Visit our website for specific measurements by style.

## Choosing The Right Size

If your body measurements for chest, waist, and hips result in different suggested sizes, order according to your largest measurement.

## Extended Sizes

Our general size range is S-4XL for men and XS-3XL for women. Many styles are offered in additional men's big and tall sizes (as denoted on style pages). An upcharge applies to men's extended sizes 4XL-5XL & LT-3XLT.



WE DONATE AT LEAST  
**5%**  
OF OUR PROFITS  
TO CHARITY



# How to Shop Storm Creek

Storm Creek is available through promotional products distributors, specialty retailers, and resorts worldwide.

Set up a business account and apply for credit terms here:  
**distributor.stormcreek.com/account/register**  
 (promotional products distributors)  
**retailer.stormcreek.com/account/register**  
 (retailers and resorts)

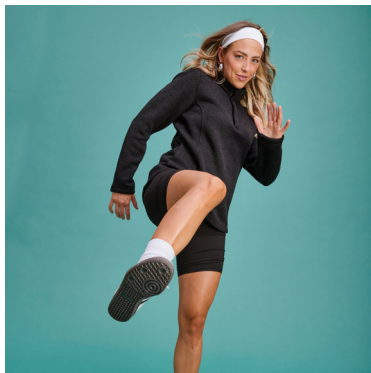
Our websites are your primary source for all things Storm Creek.

**Storm Creek Promise:** You'll be delighted with your purchase. If you're not, we'll make it right.

**ASI: 89879 | PPAI: 438091 | SAGE: 50007**  
**Customer Experience Team: 651-480-3000**  
**info@stormcreek.com**







Let's Get Social  
@storm.creek

